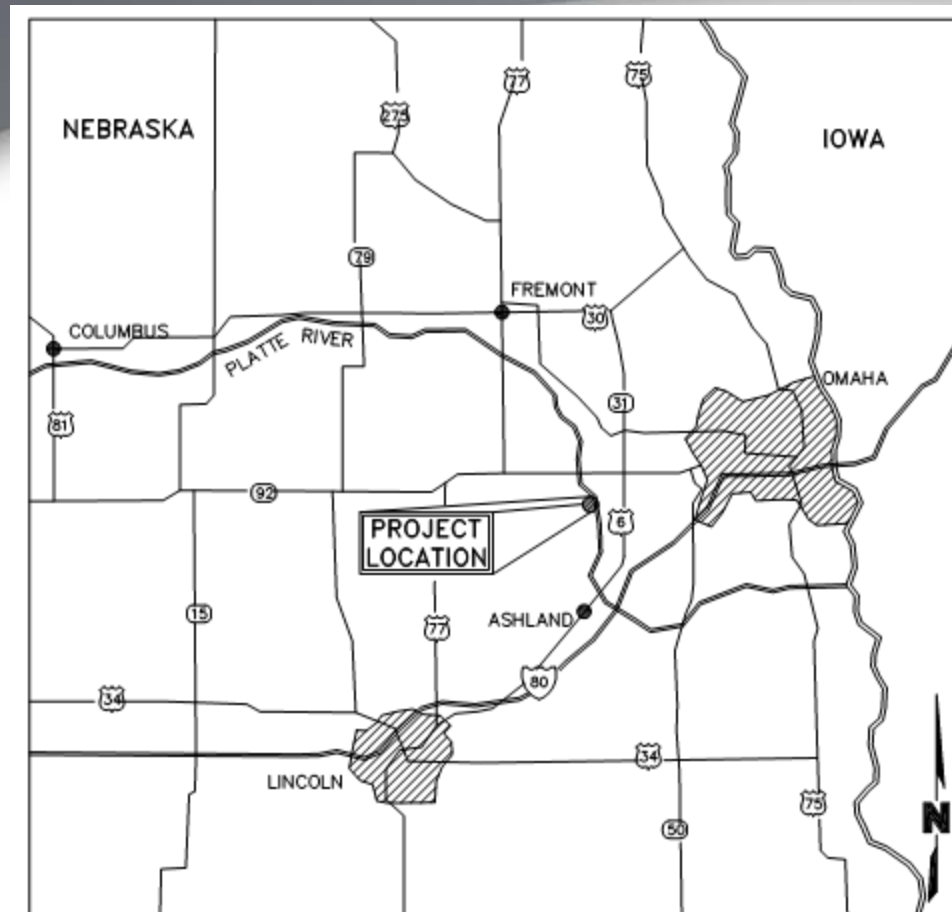


# PLATTE RIVER OBSTRUCTION REMOVAL TWO RIVER STATE PARK



LOCATION MAP  
NOT TO SCALE

# PLATTE RIVER OBSTRUCTION REMOVAL TWO RIVER STATE PARK

- Project Overview

- Base Project

- 5 Whole Piers – 14' Above of Water
    - 5 Broken Piers
    - Pier Sets On Bulb Pile Caps
      - Pile Depth Total 10' Below River Bed (Including 5' Bulb Pile Cap)

- Alternate Project – Buried Piers / Piles

- 8 Broken Piers Based On Spacing
    - 40 Wooden Piles (Estimate)

# PLATTE RIVER OBSTRUCTION REMOVAL TWO RIVER STATE PARK



# PLATTE RIVER OBSTRUCTION REMOVAL TWO RIVER STATE PARK



# PLATTE RIVER OBSTRUCTION REMOVAL TWO RIVER STATE PARK

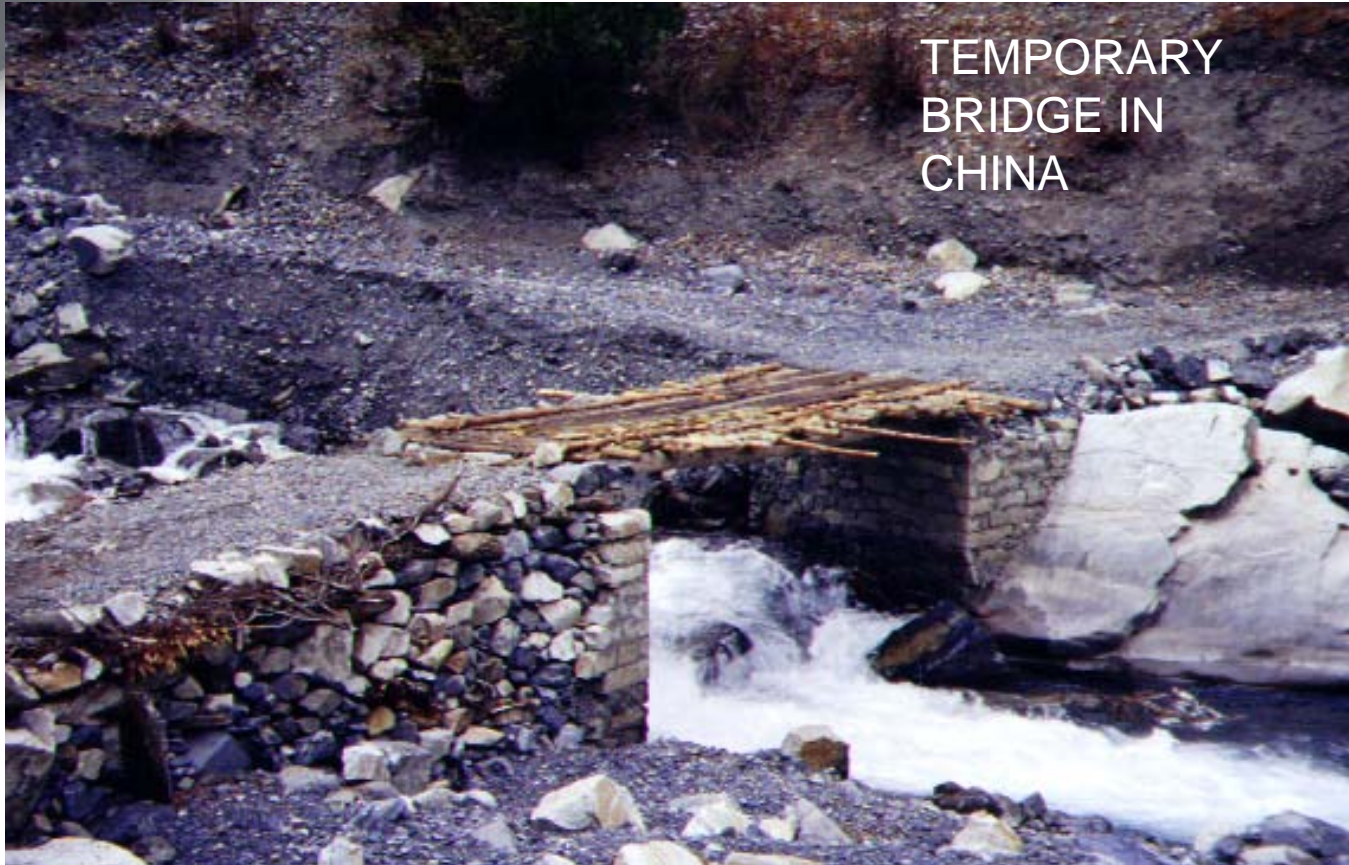


CAUSEWAY AT  
CAMP ASHLAND  
PROJECT

# PLATTE RIVER OBSTRUCTION REMOVAL TWO RIVER STATE PARK

Original Cost Opinion w/ Causeway - Half River At A Time				
Item	Quantity	Unit	Unit Cost	Total Cost
<b>Base Bid</b>				
Mobilization	1	LS	\$160,000.00	\$160,000.00
General Clearing & Grubbing	1	LS	\$30,000.00	\$30,000.00
Concrete Pier Removal - Whole Piers West Side	5	EA	\$30,000.00	\$150,000.00
Concrete Pier Removal - Broken Piers East Side	5	EA	\$20,000.00	\$100,000.00
Access Ramp / Causeway (Installed and removed)	2	EA	\$10,000.00	\$20,000.00
Silt Fence	100	LF	\$10.00	\$1,000.00
Seeding and Mulching	0.8	AC	\$4,000.00	\$3,200.00
Construction Entrance	2	EA	\$3,000.00	\$6,000.00
Misc. Gravel Road Repair (Woods Landing)	675	Ton	\$15.00	\$10,125.00
<b>Sub-Total - Base Bid</b>				<b>\$480,325.00</b>
<b>Contingencies (Misc. Items, Observation, Env. Compliance)</b>			<b>25.00%</b>	<b>\$120,081.25</b>
<b>Total - Base</b>				<b>\$600,406.25</b>
<b>Alternate</b>				
Concrete Pier Removal - Broken Piers - Buried - Middle of River	8	EA	\$20,000.00	\$160,000.00
Wood Pile Removal	50	EA	\$1,000.00	\$50,000.00
<b>Sub-Total - Alternate</b>				<b>\$210,000.00</b>
<b>Contingencies (Misc. Items, Observation, Env. Compliance)</b>			<b>25.00%</b>	<b>\$52,500.00</b>
<b>Total -Alternate</b>				<b>\$262,500.00</b>
<b>Total - Costs (Causeway)</b>				<b>\$862,906.25</b>

# PLATTE RIVER OBSTRUCTION REMOVAL TWO RIVER STATE PARK



TEMPORARY  
BRIDGE IN  
CHINA

# PLATTE RIVER OBSTRUCTION REMOVAL TWO RIVER STATE PARK



# PLATTE RIVER OBSTRUCTION REMOVAL TWO RIVER STATE PARK

Cost Opinion w/ Construction Access Bridge - Span Entire River				
Item	Quantity	Unit	Unit Cost	Total Cost
<b>Base Bid</b>				
Mobilization	1	LS	\$160,000.00	\$160,000.00
General Clearing & Grubbing	1	LS	\$30,000.00	\$30,000.00
Concrete Pier Removal - Whole Piers West Side	5	EA	\$30,000.00	\$150,000.00
Concrete Pier Removal - Broken Piers East Side	5	EA	\$20,000.00	\$100,000.00
Temporary Bridge / Work Platform	16800	SF	\$40.00	\$672,000.00
Silt Fence	100	LF	\$10.00	\$1,000.00
Seeding and Mulching	0.8	AC	\$4,000.00	\$3,200.00
Misc. Gravel Road Repair (Woods Landing)	675	Ton	\$15.00	\$10,125.00
<b>Sub-Total - Base Bid</b>				<b>\$1,126,325.00</b>
<b>Contingencies (Misc. Items, Observation, Env. Compliance)</b>			<b>25.00%</b>	<b>\$281,581.25</b>
<b>Total -Base</b>				<b>\$1,407,906.25</b>
<b>Alternate - Buried Piers</b>				
Concrete Pier Removal - Broken Piers - Buried - Middle of River	8	EA	\$20,000.00	\$160,000.00
Wood Pile Removal	50	EA	\$1,000.00	\$50,000.00
<b>Sub-Total - Alternate</b>				<b>\$210,000.00</b>
<b>Contingencies (Misc. Items, Observation, Env. Compliance)</b>			<b>25.00%</b>	<b>\$52,500.00</b>
<b>Total -Alternate</b>				<b>\$262,500.00</b>
<b>Total - Costs (Temp. Bridge)</b>				<b>\$1,670,406.25</b>

# PLATTE RIVER OBSTRUCTION REMOVAL TWO RIVER STATE PARK



HOLMES LAKE -  
SWAMP BUGGY  
EXCAVATOR

# PLATTE RIVER OBSTRUCTION REMOVAL TWO RIVER STATE PARK

Cost Opinion Work In River - Entire River				
Item	Quantity	Unit	Unit Cost	Total Cost
<b>Base Bid</b>				
Mobilization	1	LS	\$200,000.00	\$200,000.00
a. Excavator #1 (bucket) - Equipment Rental (Marsh Buggy)	2	Month	\$25,000.00	\$50,000.00
b. Excavator #2 (breaker) - Equipment Rental (Marsh Buggy)	2	Month	\$25,000.00	\$50,000.00
c. Excavator #3 (haul) - Equipment Rental (Marsh Buggy)	2	Month	\$25,000.00	\$50,000.00
General Clearing & Grubbing	1	LS	\$30,000.00	\$30,000.00
Concrete Pier Removal - Whole Piers West Side	5	EA	\$30,000.00	\$150,000.00
Concrete Pier Removal - Broken Piers East Side	5	EA	\$20,000.00	\$100,000.00
Silt Fence	100	LF	\$10.00	\$1,000.00
Seeding and Mulching	0.8	AC	\$4,000.00	\$3,200.00
Misc. Gravel Road Repair (Woods Landing)	675	Ton	\$15.00	\$10,125.00
<b>Sub-Total - Base Bid</b>				<b>\$644,325.00</b>
<b>Contingencies (Misc. Items, Observation, Env. Compliance)</b>			<b>25.00%</b>	<b>\$161,081.25</b>
<b>Total -Base</b>				<b>\$805,406.25</b>
<b>Alternate - Buried Piers</b>				
Concrete Pier Removal - Broken Piers - Buried - Middle of River	8	EA	\$20,000.00	\$160,000.00
Wood Pile Removal	50	EA	\$1,000.00	\$50,000.00
<b>Sub-Total - Alternate</b>				<b>\$210,000.00</b>
<b>Contingencies</b>			<b>25.00%</b>	<b>\$52,500.00</b>
<b>Total -Alternate</b>				<b>\$262,500.00</b>
<b>Total - Costs (Work In River)</b>				<b>\$1,067,906.25</b>

# PLATTE RIVER OBSTRUCTION REMOVAL TWO RIVER STATE PARK OTHER OPTIONS

Cost Opinion Work In River- East Half Removal Only				
Item	Quantity	Unit	Unit Cost	Total Cost
<b>Base Bid</b>				
Mobilization	1	LS	\$160,000.00	\$160,000.00
a. Excavator #1 (bucket) - Equipment Rental (Marsh Buggy)	2	Month	\$25,000.00	\$50,000.00
b. Excavator #2 (breaker) - Equipment Rental (Marsh Buggy)	2	Month	\$25,000.00	\$50,000.00
c. Excavator #3 (haul) - Equipment Rental (Marsh Buggy)	2	Month	\$25,000.00	\$50,000.00
General Clearing & Grubbing	1	LS	\$30,000.00	\$30,000.00
Concrete Pier Removal - Whole Piers West Side	0	EA	\$30,000.00	\$0.00
Concrete Pier Removal - Broken Piers East Side	5	EA	\$20,000.00	\$100,000.00
Silt Fence	100	LF	\$10.00	\$1,000.00
Seeding and Mulching	0.8	AC	\$4,000.00	\$3,200.00
<b>Sub-Total - Base Bid</b>				<b>\$444,200.00</b>
<b>Contingencies (Misc. Items, Observation, Env. Compliance)</b>			<b>25.00%</b>	<b>\$111,050.00</b>
<b>Total -Base</b>				<b>\$555,250.00</b>
Cost Opinion w/ Construction Access Bridge - East Half Removal Only				
Item	Quantity	Unit	Unit Cost	Total Cost
<b>Base Bid</b>				
Mobilization	1	LS	\$160,000.00	\$160,000.00
General Clearing & Grubbing	1	LS	\$30,000.00	\$30,000.00
Concrete Pier Removal - Whole Piers West Side	0	EA	\$30,000.00	\$0.00
Concrete Pier Removal - Broken Piers East Side	5	EA	\$20,000.00	\$100,000.00
Temporary Bridge / Work Platform	4500	SF	\$40.00	\$180,000.00
Silt Fence	100	LF	\$10.00	\$1,000.00
Seeding and Mulching	0.8	AC	\$4,000.00	\$3,200.00
<b>Sub-Total - Base Bid</b>				<b>\$474,200.00</b>
<b>Contingencies (Misc. Items, Observation, Env. Compliance)</b>			<b>25.00%</b>	<b>\$118,550.00</b>
<b>Total -Base</b>				<b>\$592,750.00</b>

# PLATTE RIVER OBSTRUCTION REMOVAL TWO RIVER STATE PARK



# PLATTE RIVER OBSTRUCTION REMOVAL TWO RIVER STATE PARK

- Permitting Summary
  - Causeways will not be allowed
  - Must use a temporary bridge or work in the river
  - Dates are critical
    - Pallid Sturgeon February 1 – July 31
    - Terns & Plovers – April 15 – August 15
  - Consider moving forward on an Individual Permit to allow causeways

# PLATTE RIVER OBSTRUCTION REMOVAL TWO RIVER STATE PARK

- Construction Summary
  - Total removal of visible and anticipated buried piers is very costly
  - Consider leaving the 5 full piers on the west side of the river
  - Consider removing only visible piers on the east side
  - May be able to reduce cost of bridge option if river is low