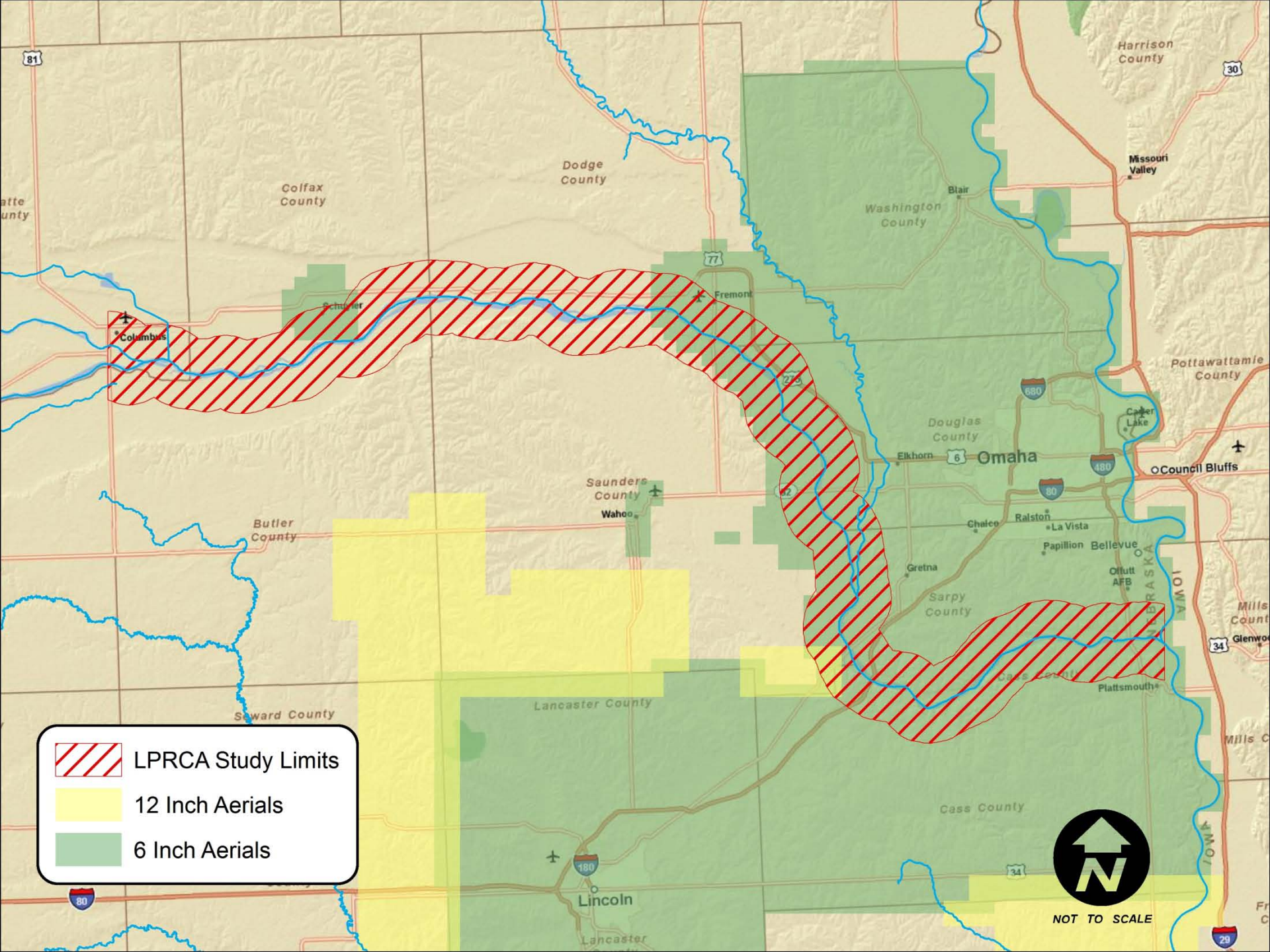






Aerial Imagery


Flight Dates

- NIROC Flights:
 - April 29, 2010
 - Limited Coverage Area
 - Currently Available



 LPRCA Study Limits

 12 Inch Aerials

 6 Inch Aerials



NOT TO SCALE

NIROC Re-flights

- 6" RGB Imagery for the LPRCA Area
 - Approximately 565 mi²
 - \$146 per mi²
 - \$82,490

GIS Workshop

- Flown on a Speculation Basis
- \$15,000 for the Entire Area
- \$80 per Linear Mile for Additional Areas
- All Nebraska Agencies Covered for First 24 Months
- Freely Distributable After Initial 24 Months

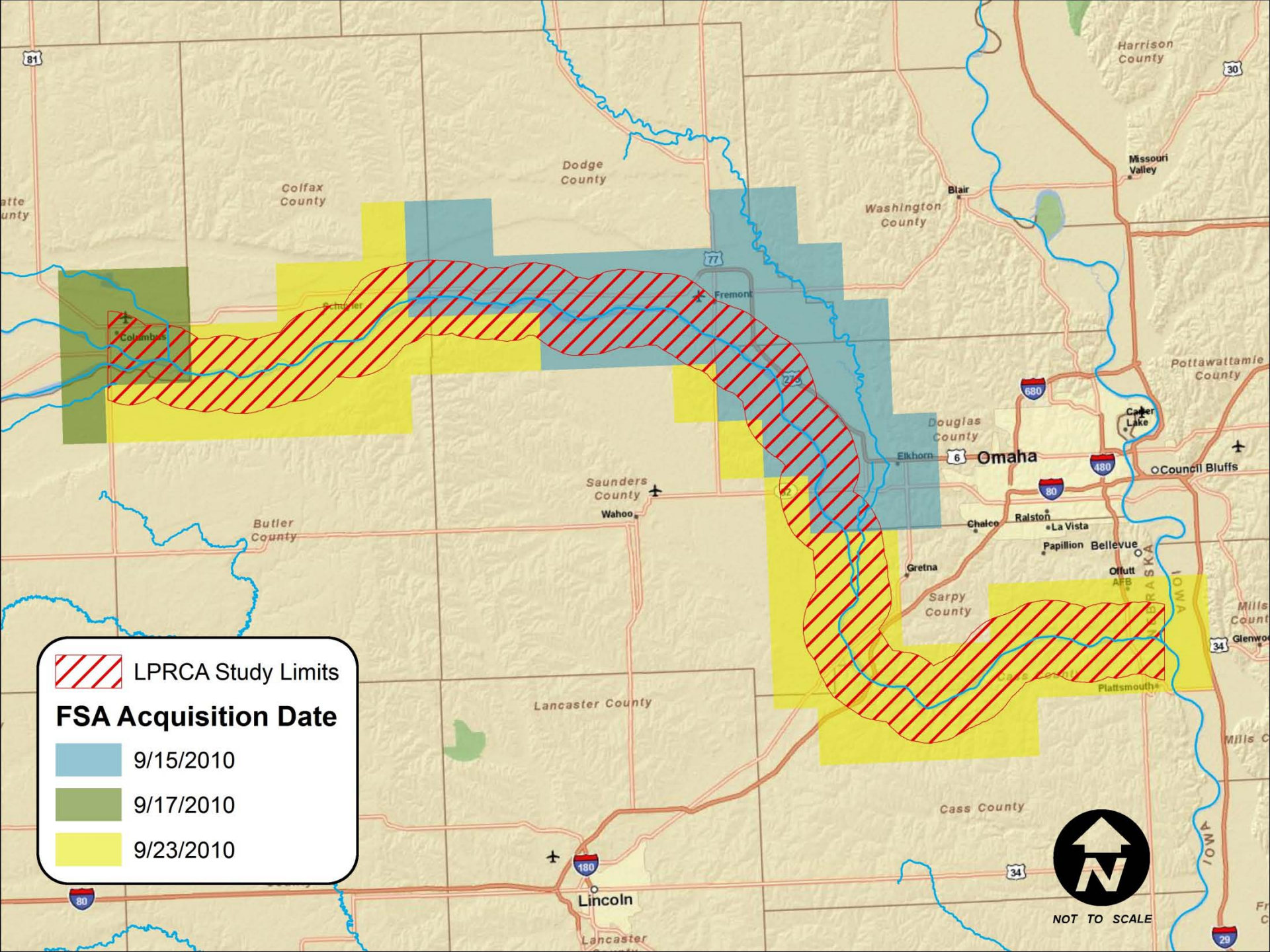


FSA Flight Dates

- FSA Flights:

- September 15th, 17th and 23rd
- Complete Coverage
- Currently Available
- Geospatial Data Gateway

<http://datagateway.nrcs.usda.gov/GDGOrder.aspx>



LPRCA Study Limits

FSA Acquisition Date



9/15/2010



9/17/2010



9/23/2010



NOT TO SCALE

2009 NAIP



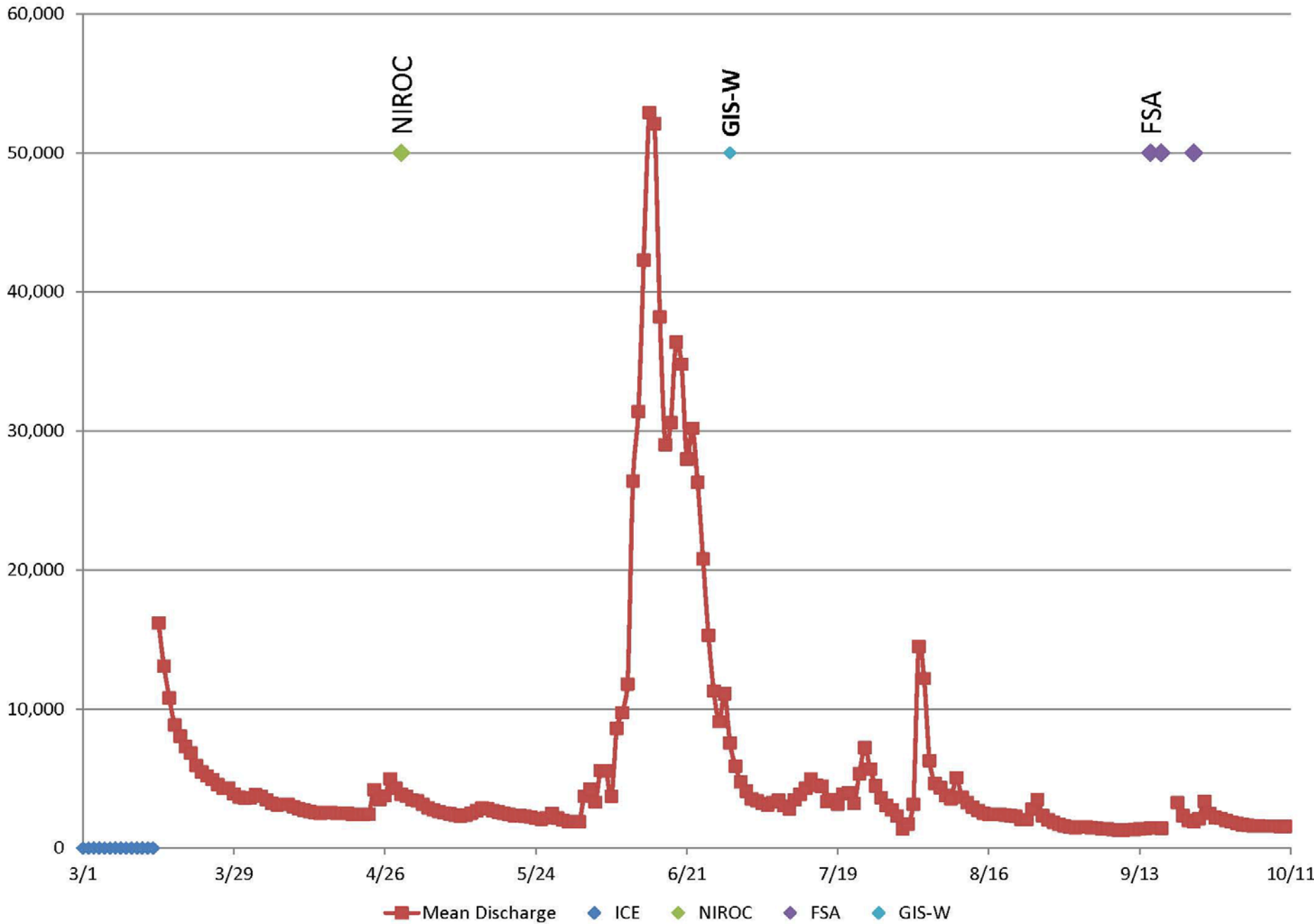
NOT TO SCALE

2010 NAIP

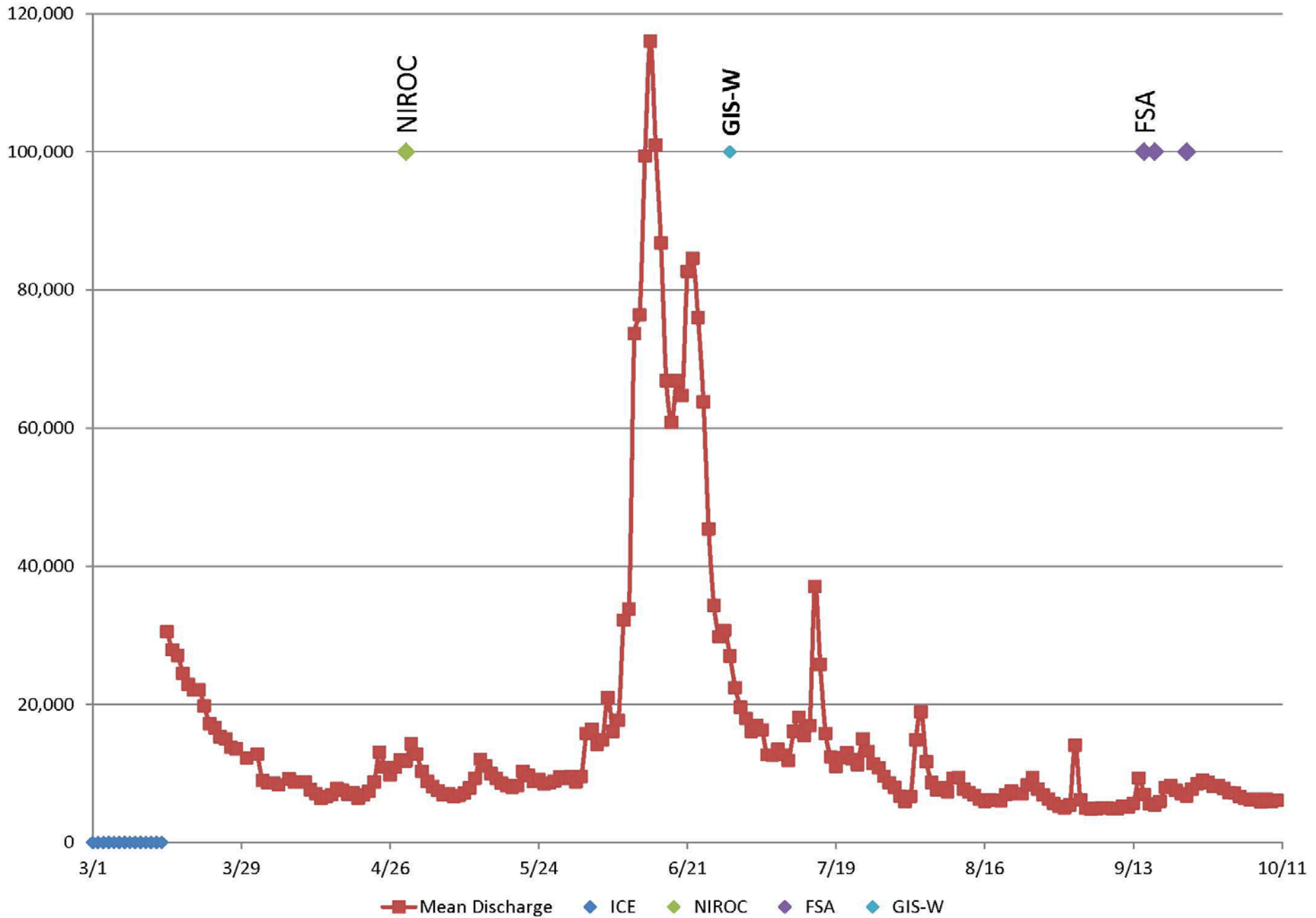


NOT TO SCALE

Mean Daily Discharge (cfs) at Waterloo



Mean Daily Discharge (cfs) at Louisville



Flight Dates

	Date	Waterloo (cfs)	Louisville (cfs)
NIROC	4/29/2010	3,890	11,800
FSA	9/15/2010	1,450	7,000
	9/17/2010	1,430	5,440
	9/23/2010	1,890	6,750
GIS Workshop	6/29/2010	7,560	27,000

Ashland Pilot Model

- Coordination with USACE and MUD
- Training with USGS
- Continued Model Development