

The Davis Prairie Data Shack

In Spring 2005, Mr. T.L. Davis donated his homestead to the NU Foundation.

The NU Foundation, in turn, has granted

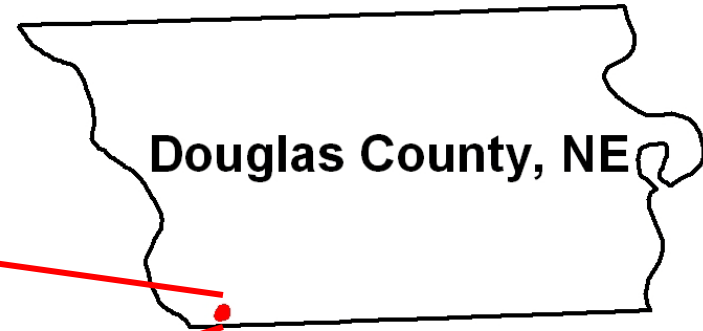
UNO

a lease to use this property for education and research.

T.L. Davis Prairie



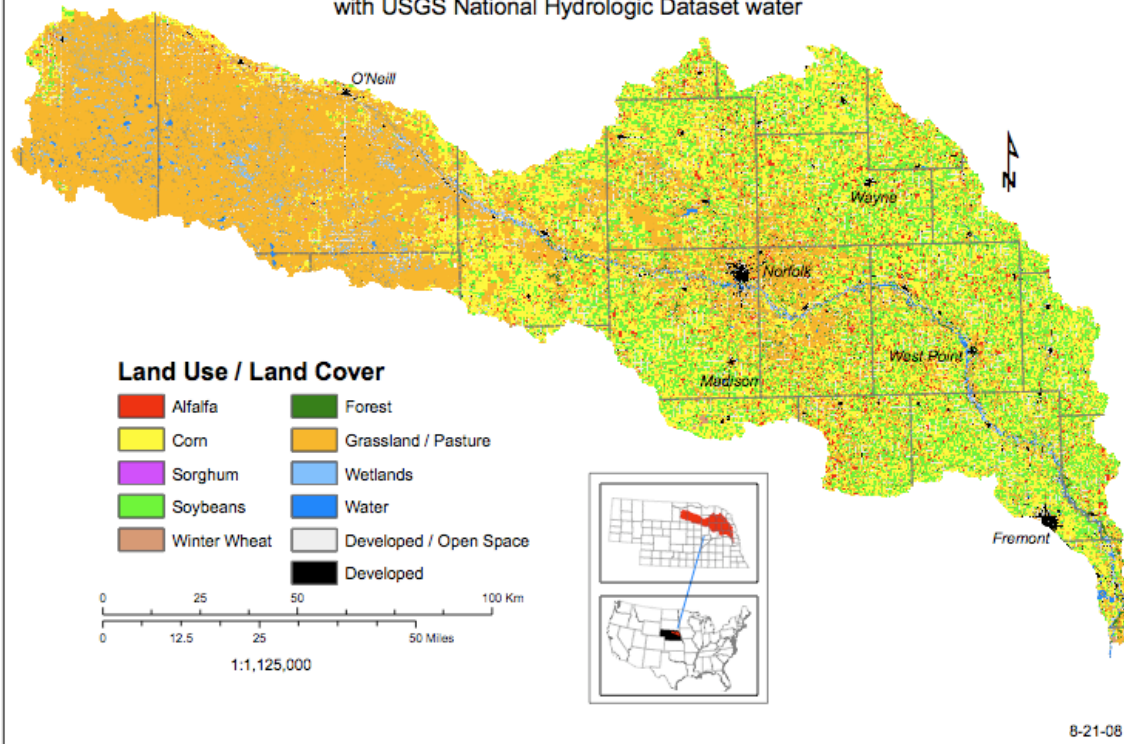
Location



Davis Prairie Data Shack

Elkhorn Basin Land Use / Land Cover

2007 USDA-NASS Cropland Data Layer
with USGS National Hydrologic Dataset water



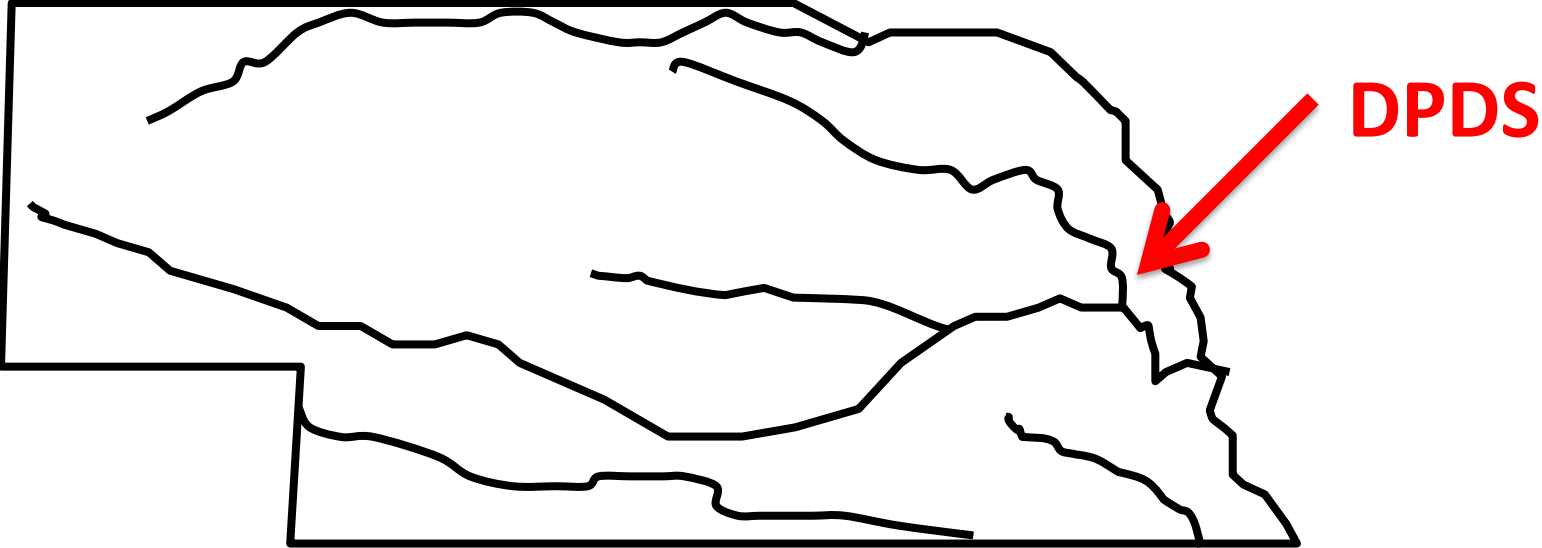
Davis Prairie
Data Shack

The Davis Prairie Data Shack

- 200 ft² data acquisition center
- Long-term monitoring station.
- Continuous flow of Elkhorn River water.
- Real-time feed of water quality data to UNO.
- Online accessibility for data and archived videos.
- Archived videos on a variety of environmental subjects.
- Focus on citizen science and ‘students teaching students’.



Possible expansion to other watersheds?



Support for the DPDS

T
o
t
a
l

p
r
o
j
e
c
t
e



\$60,000



\$20,000



\$10,000

Unsupported \$30,000



**Lower Platte River
CORRIDOR ALLIANCE**