



Lower Platte River  
CORRIDOR ALLIANCE

LEAD. ORGANIZE. INSPIRE.  
The voice of the Lower Platte.



Environmental **Suitability Assessment**

## **Roll-Out Plan, LSA, ArcGIS Update**

July 26, 2010

A planning resource for natural environments

# Items For Today

- Product Roll-Out Plan
- LSA Model Update





# Product Roll-Out

## Summary of Activities and Schedule



Lower Platte River  
CORRIDOR ALLIANCE

LEAD. ORGANIZE. INSPIRE. The voice of the Lower Platte.



Environmental Suitability Assessment

# Product Roll-Out Plan – Activities Completed

- User Survey
- Product Branding/Templates
- Outreach Seminars
  - “lower” Lower Platte River Seminar
    - Week of September 13
    - Papio-Missouri NRD late afternoon/early evening
  - Target Audience Focus – County Commission Meetings
    - Dodge County (Fremont, North Bend, Morse Bluff)
    - Colfax County (Schuyler)
    - Platte County (Columbus)





# LSA Update

## Project Status and Next Steps



Lower Platte River  
CORRIDOR ALLIANCE

LEAD. ORGANIZE. INSPIRE. The voice of the Lower Platte.



Environmental Suitability Assessment

# LSA Model Update – Last October (2009)

## Steps for Model Development

1. Review Existing Models
2. Determine Goals/Objectives of LPRCA Model
3. Develop Preliminary Draft Model
4. Obtain Technical Input
5. Revise Model
- 6. Run Model**
7. Review Results with TAC
8. Revise Model



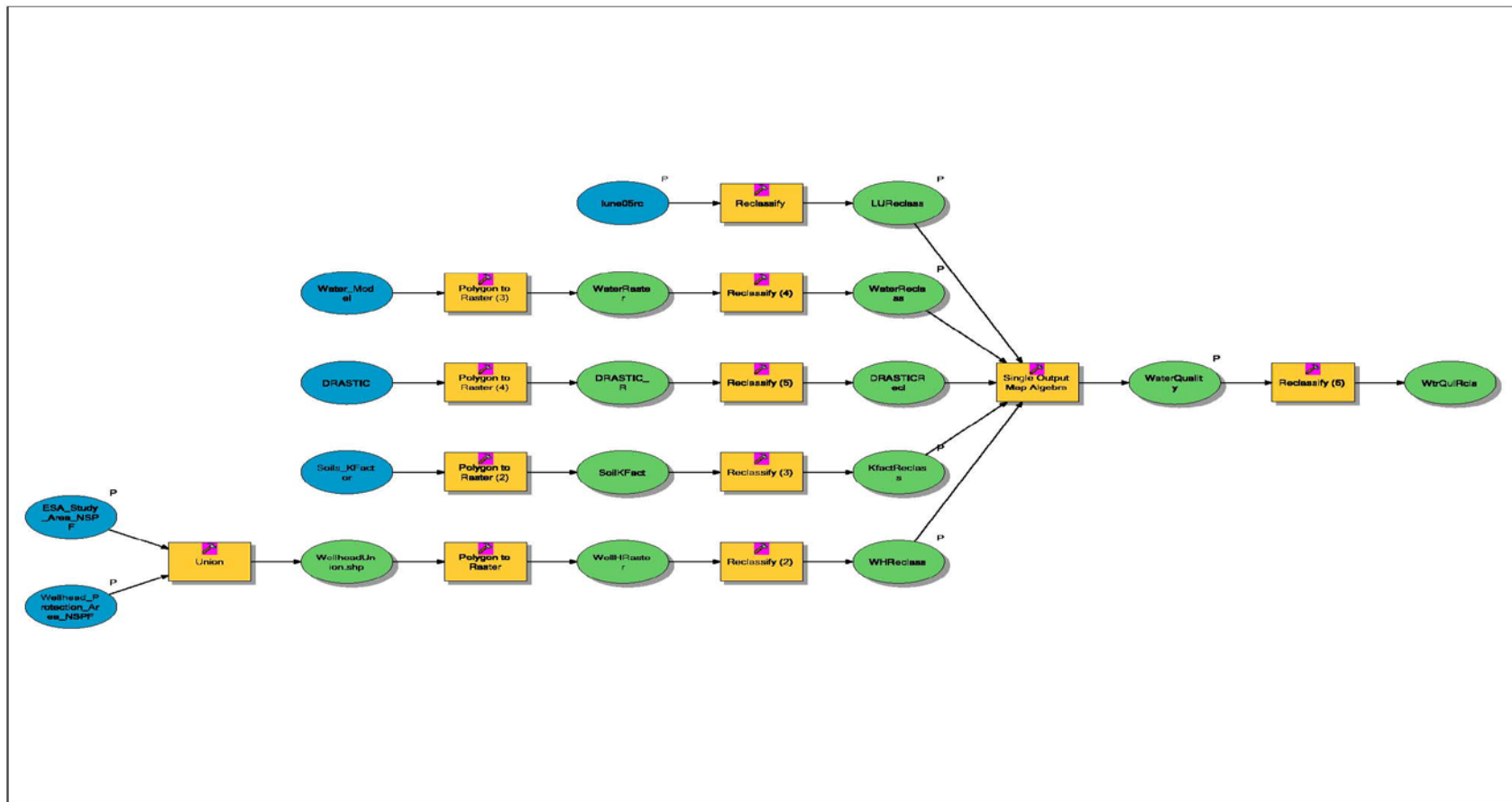
# LSA Model Update

## Pre-Model Suitability Analysis for Water Quality Protection- Groundwater and Surface Water

The intent of the Feature: The Groundwater and Surface Water feature focuses on protecting areas that are vulnerable to water quality issues such as recharge areas for groundwater and surface water degradation.

<i>Factors</i>	<i>Low Suitability</i>	<i>Medium Suitability</i>	<i>High Suitability</i>	<i>Assigned Weight</i>
<i>Numeric Criteria</i>	0	1	2	
<i>Proximity to Water/Wetlands</i>	Greater than 150 feet	100–150 feet	Less than 100 feet	2
<i>Existing Land Use</i>	All others		Forest, Water, and Range	2
<i>Proximity to Well Head Protection/</i>	Outside of a well head protection area		Inside a well head protection area	2
<i>Soil Erodibility</i>	0.0-0.22	0.23-0.44	0.45 - 0.69	2
<i>Groundwater Vulnerability (DRASTIC Index)</i>	2-0	5-3	9-6	2

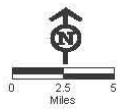
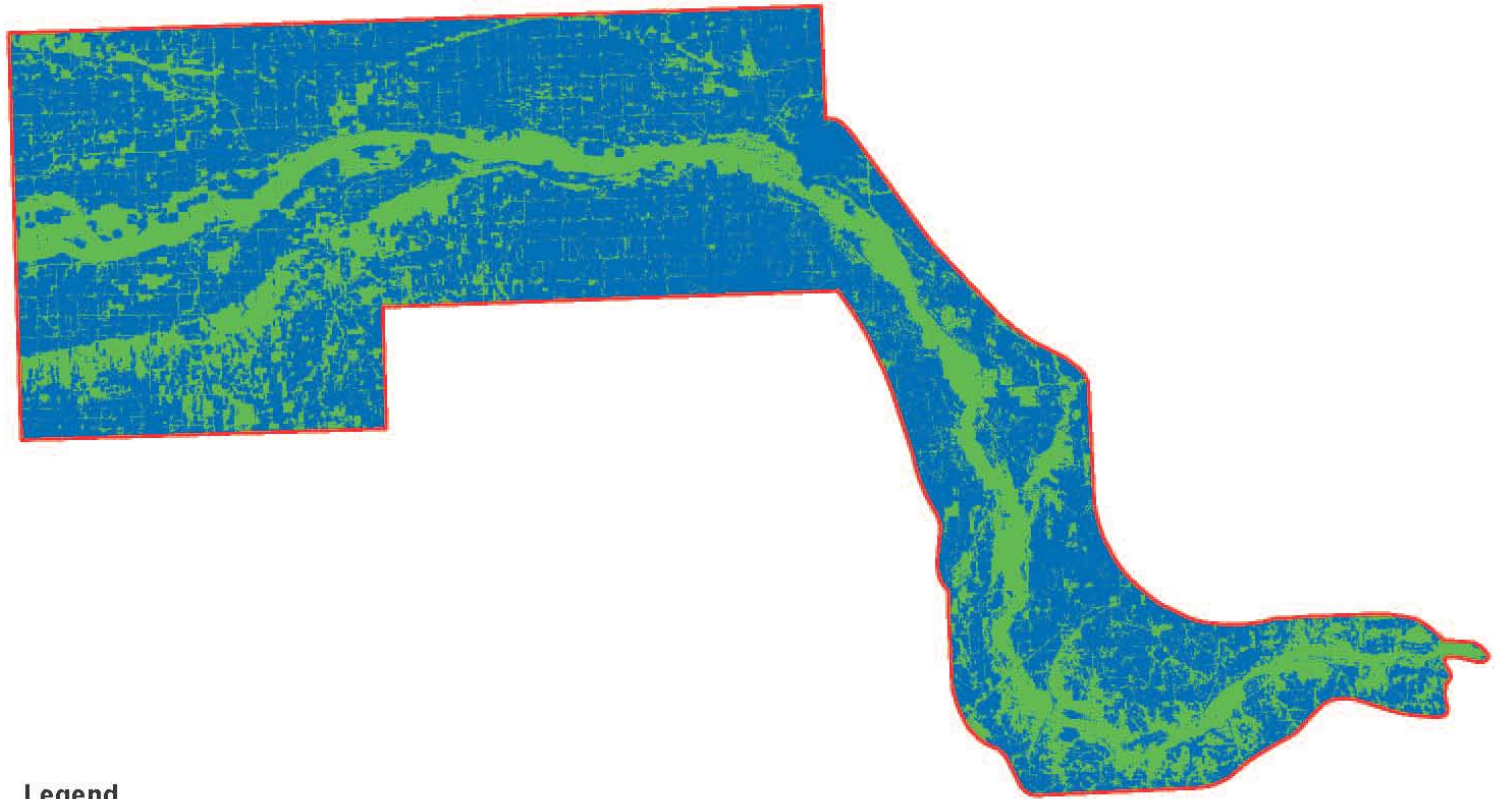




Water\_Quality\_LSA\_Model



## Water Quality Land Use Reclass



### Legend



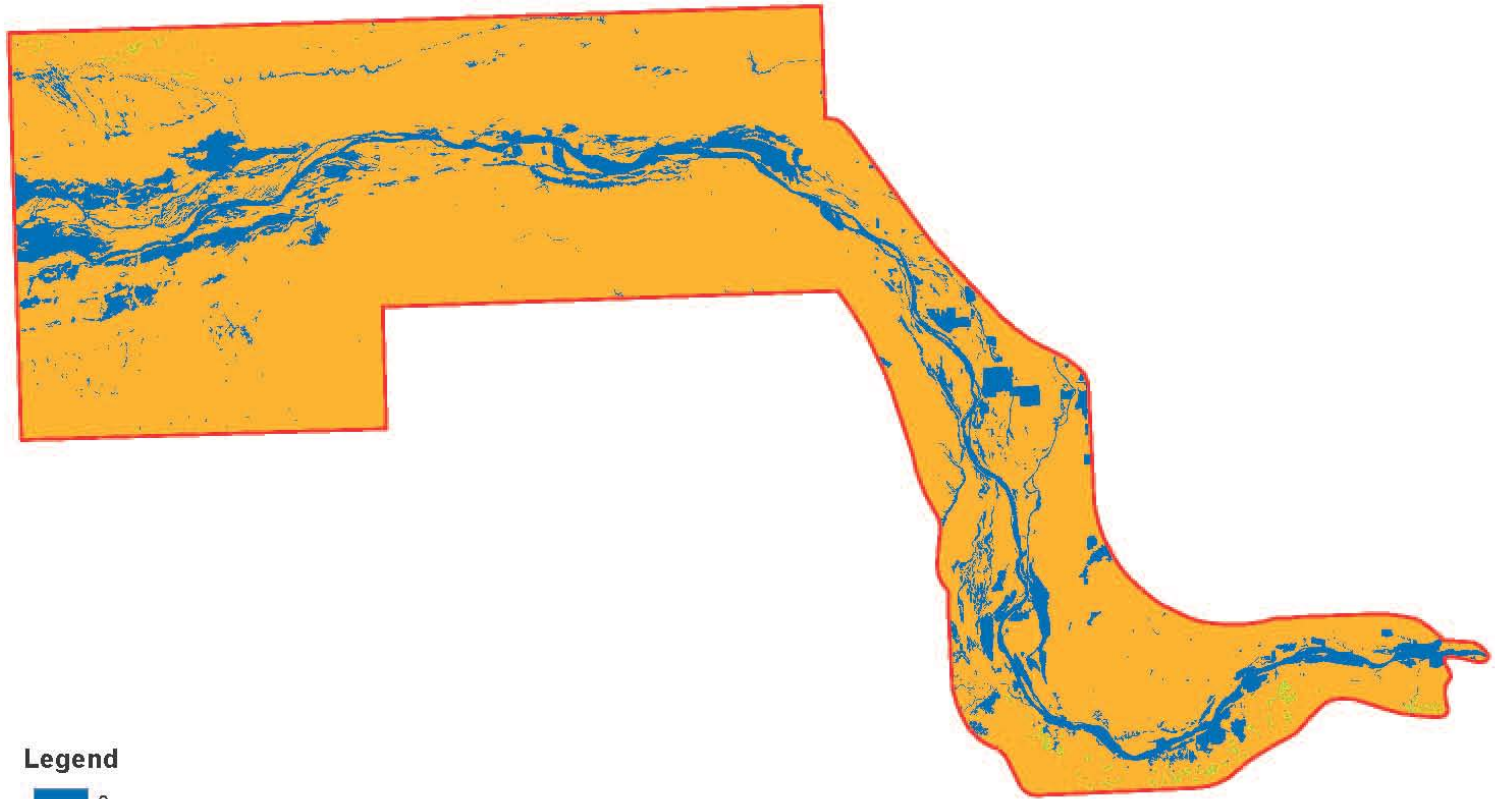
Lower Platte River  
CORRIDOR ALLIANCE

LEAD. ORGANIZE. INSPIRE. The voice of the Lower Platte.

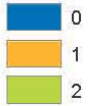


Environmental Suitability Assessment

## Water Quality Soil Erosion



### Legend



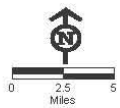
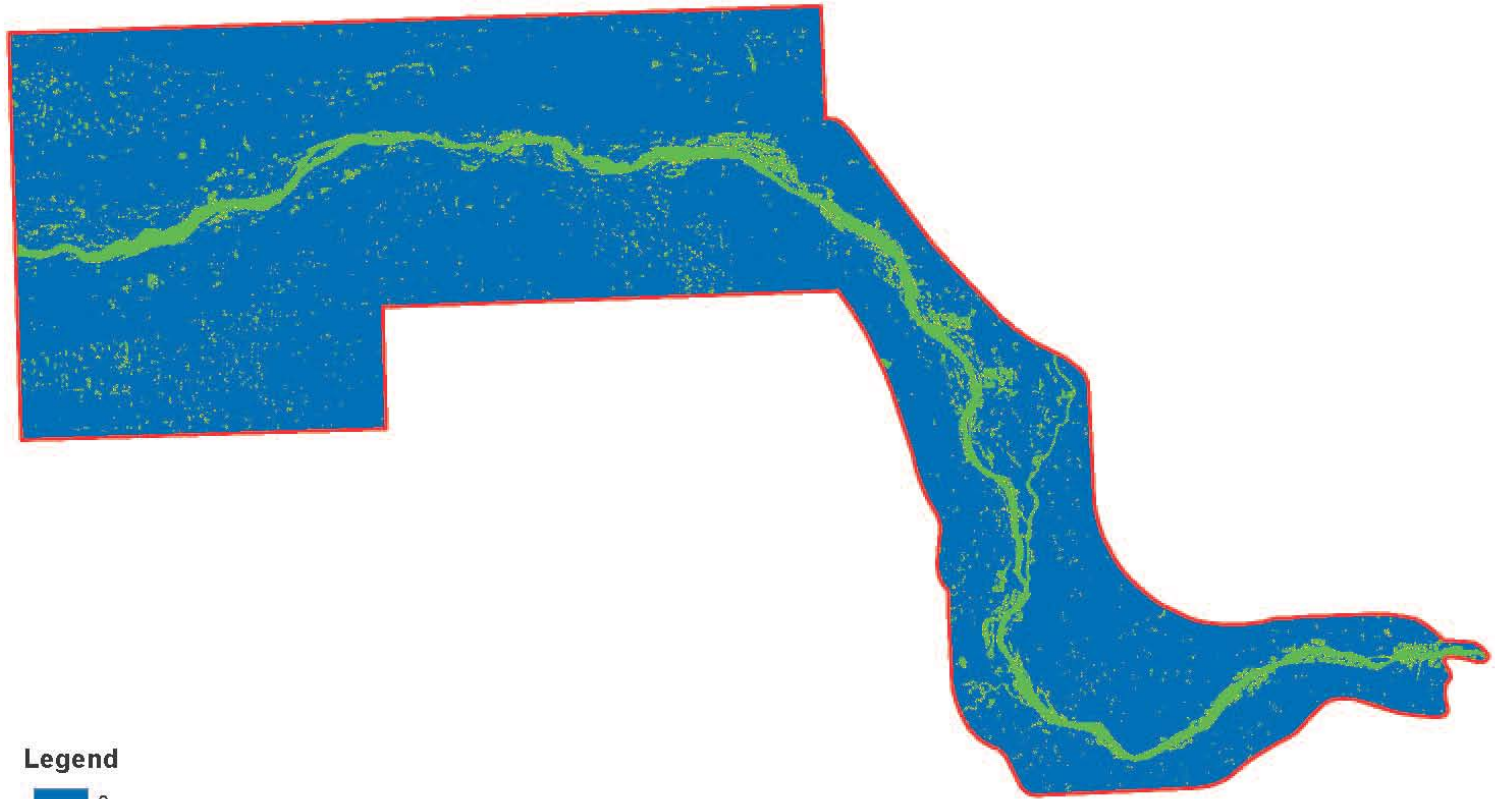
Lower Platte River  
CORRIDOR ALLIANCE

LEAD. ORGANIZE. INSPIRE. The voice of the Lower Platte.

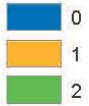


Environmental Suitability Assessment

## Water Quality Proximity to Wetlands and NHD Water Body



### Legend



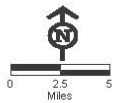
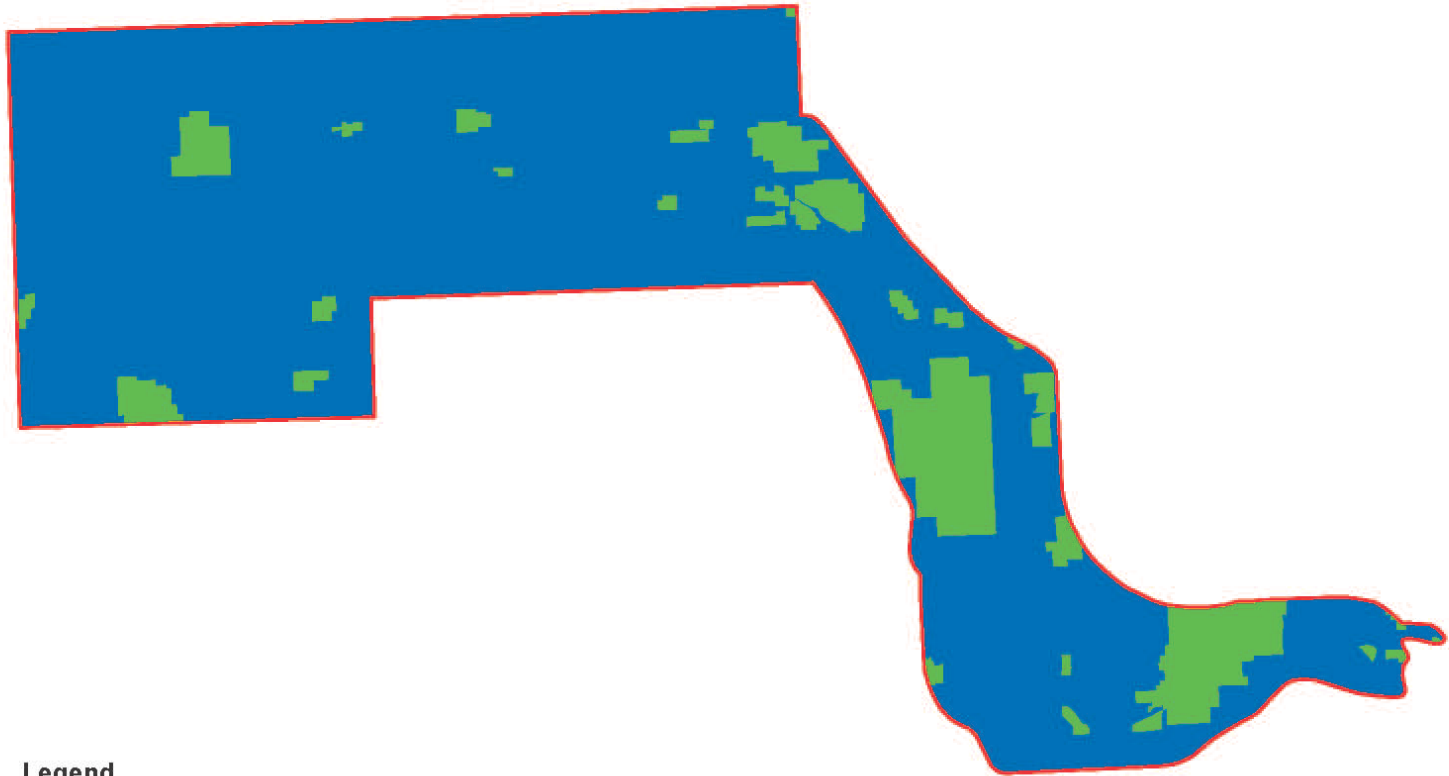
Lower Platte River  
CORRIDOR ALLIANCE

LEAD. ORGANIZE. INSPIRE. The voice of the Lower Platte.



Environmental Suitability Assessment

## Water Quality Well Head Reclass



### Legend



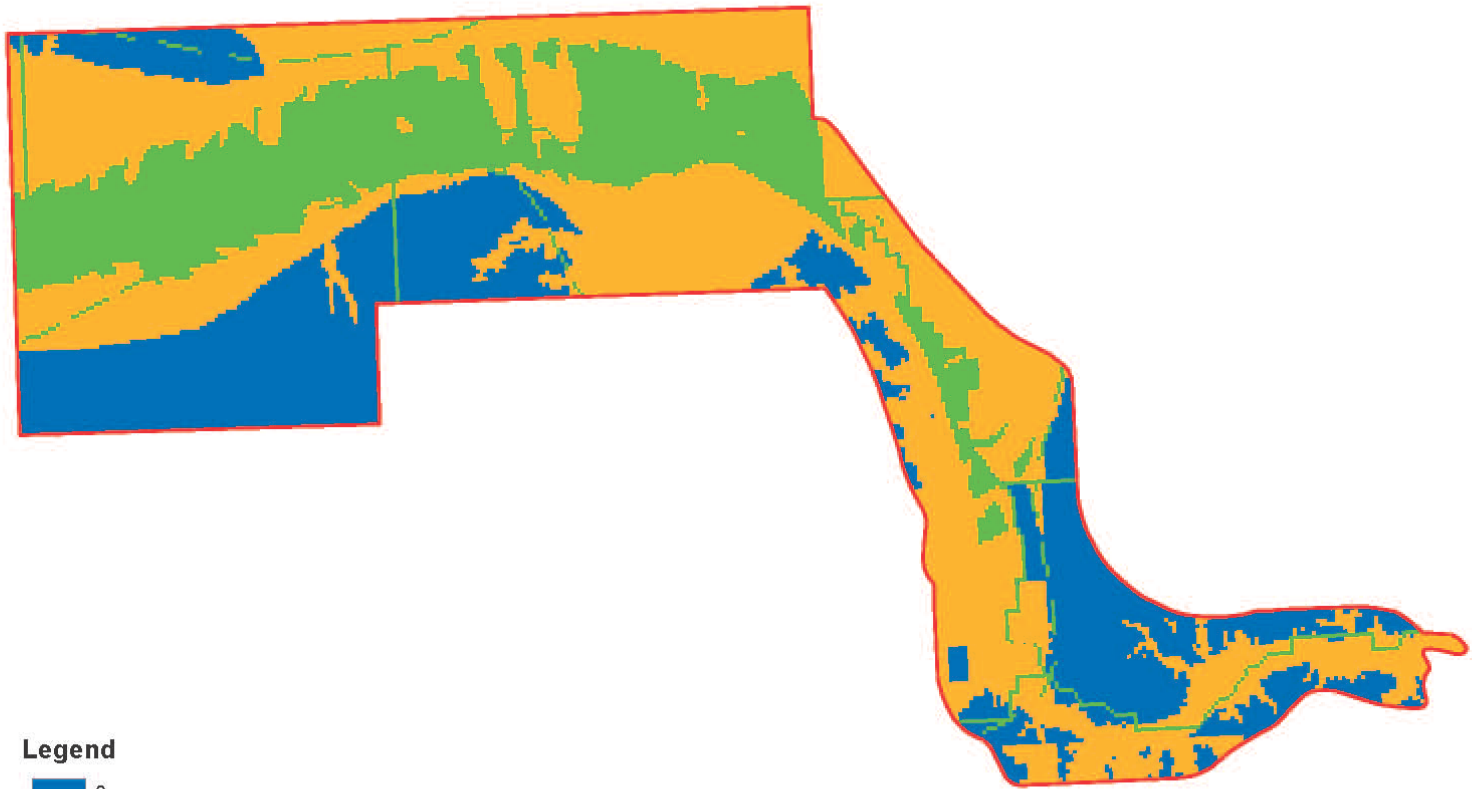
Lower Platte River  
CORRIDOR ALLIANCE

LEAD. ORGANIZE. INSPIRE. The voice of the Lower Platte.

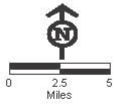


Environmental Suitability Assessment

## Water Quality DRASTIC Reclass



### Legend



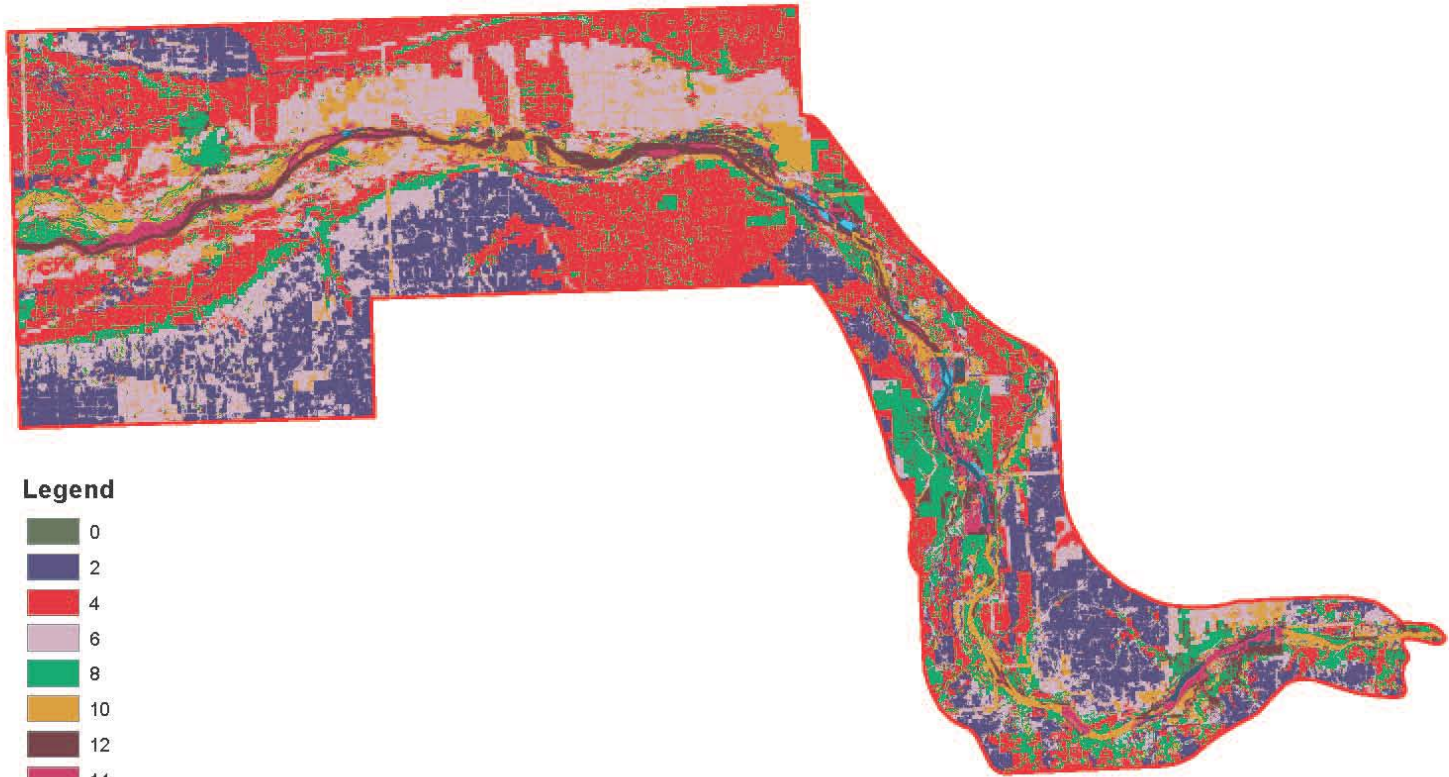
Lower Platte River  
CORRIDOR ALLIANCE

LEAD. ORGANIZE. INSPIRE. The voice of the Lower Platte.

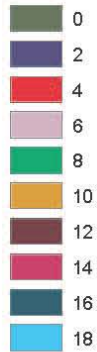


Environmental Suitability Assessment

## Water Quality LSA



### Legend



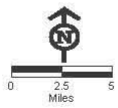
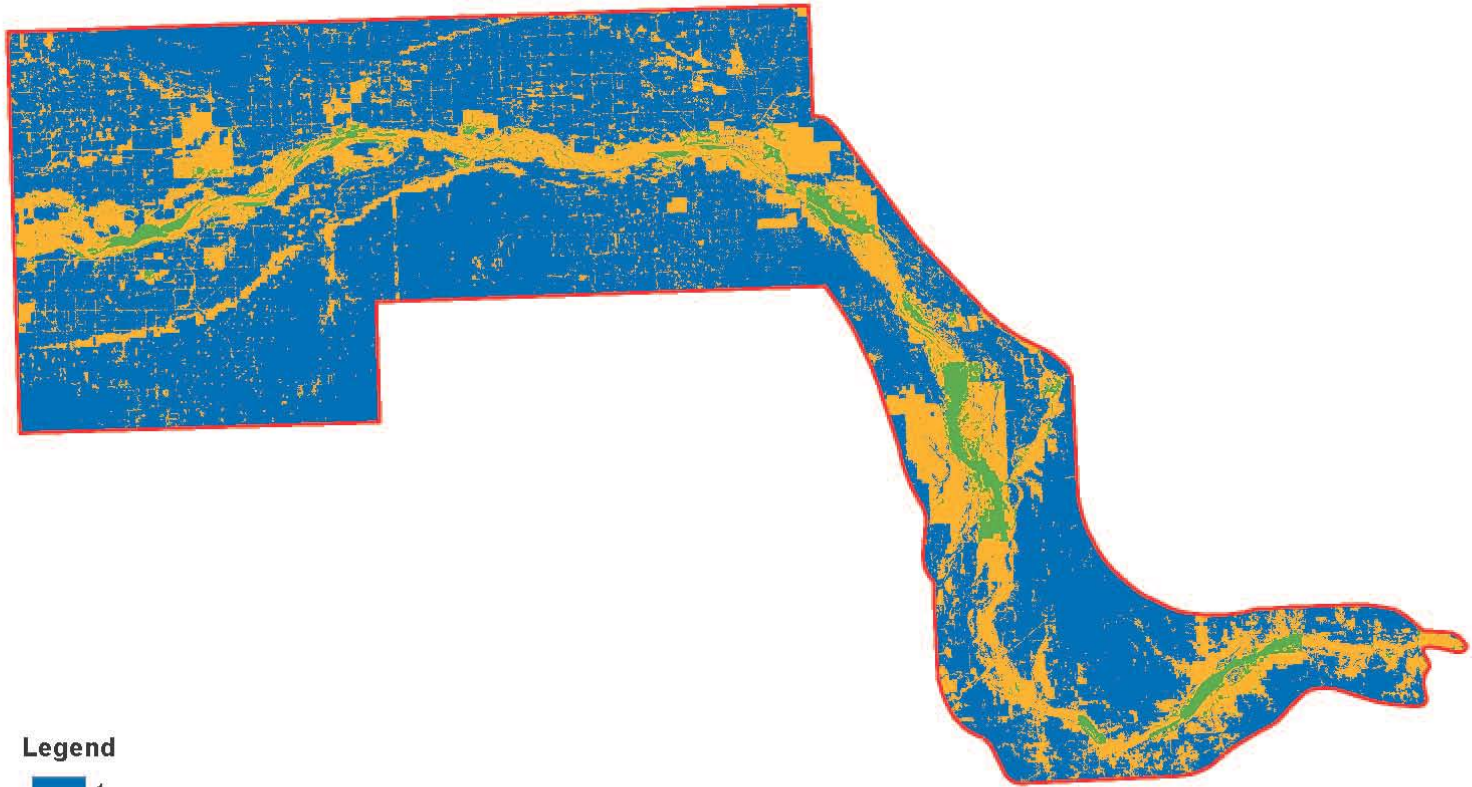
Lower Platte River  
CORRIDOR ALLIANCE

LEAD. ORGANIZE. INSPIRE. The voice of the Lower Platte.

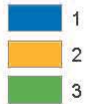


Environmental Suitability Assessment

## Water Quality Reclass LSA



### Legend



Lower Platte River  
CORRIDOR ALLIANCE

LEAD. ORGANIZE. INSPIRE. The voice of the Lower Platte.



Environmental Suitability Assessment



Questions!



Lower Platte River  
CORRIDOR ALLIANCE

LEAD. ORGANIZE. INSPIRE. The voice of the Lower Platte.



Environmental Suitability Assessment